

# REGULATION UPDATES

## SWIMMING, BATHING, AND SPLASH PAD

### NEW AND UPDATED REGULATIONS

- **902 KAR 10:120** – KY Public swimming and bathing facilities
- **902 KAR 10:121** – Plan review, annual permitting and inspection fees
- **NEW 902 KAR 10:190** – Splash pads operated by local governments

### THE FOLLOWING COMPONENTS ARE ALLOWED AND MUST BE MAINTAINED

- **NSF APPROVED** Perlite filters with Perlite media (**GLASS MEDIA IS NOT APPROVED**)
- **NSF APPROVED** UV disinfection systems can be used to supplement sanitizers
- Main Drain grates must meet ASME/ANSI A112.19.8 performance standard
  - **These drain grates cannot be expired.** Date of purchase or manufacturer expiration date for the Establishment drain grate must be kept on file at the establishment or be given to the local health department for record keeping

### TEST KIT REQUIREMENTS

- Must be DPD based
- Chlorine range must be 0.1 ppm to 5.0 ppm
- pH range must be 6.8 to 8.4
- Chlorine and pH test must be accurate within 0.2 units
- Cyanuric acid test must be able to read up to 100 ppm
- **DIP AND READ TESTS ARE NOT ALLOWED, EVEN IF DPD BASED**

### WATER QUALITY STANDARDS

- Disinfectants (Free available)
  - Chlorine: 1-5 ppm
  - Bromine: 2-6 ppm
- Superchlorination (shock) is required when chloramine levels  $\geq 0.2$  ppm
- **CHLORINATED CYANURATES (DICHLOR/TRICHLOR) ARE PROHIBITED**

### FACILITY RULES

- Service animals may be allowed on the pool deck but shall be excluded from the water

### LIFEGUARD REQUIREMENTS FOR POOLS

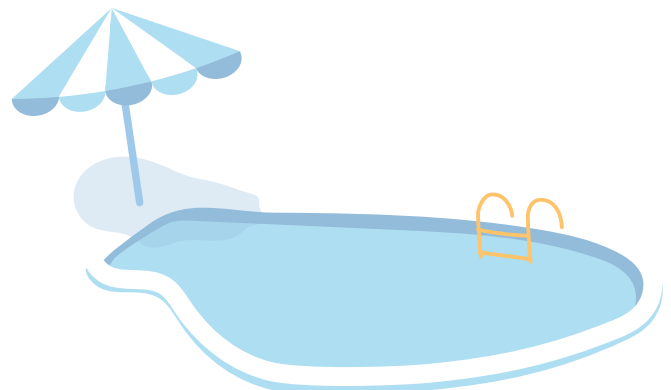
- Lifeguard shall be on duty at facilities that have  $\geq 2000$  sq. ft at a rate of 1 per 2000 sq. ft or fraction thereof
- **OR**
- Lifeguard shall be on duty at any facility, regardless of size, that allows bathers  $\leq 17$  years old to enter
- **OR**
- Any pool facility not required to provide a lifeguard must post the following 2 signs at all entrances:
  - No lifeguard on duty
  - No person may enter the facility alone or swim alone
- **RESCUE TUBES MAY BE USED IN LIEU OF RING BUOYS WHEN LIFEGUARDS ARE PRESENT**

### LIFEGUARD REQUIREMENTS FOR BEACHES

- Beaches are no longer mandated to have life guards **UNLESS:**
  - Bathers  $\leq 17$  years old are allowed to enter the water without a responsible adult present
  - An inflatable water attraction is present at a rate of at least 1 lifeguard per attraction, or as many as necessary to ensure clear visibility by lifeguards

### SAFETY EQUIPMENT

- Telephone shall be a non-pay landline, continuously connected to a power source, operate at all times, capable of dialing 911 directly
  - **TELEPHONE CANNOT BE CORDLESS**
- Address of the facility must be posted in a conspicuous place near the telephone
- Backboards must have a head immobilizer and at least 3 straps



## **CONDITIONS REQUIRING CLOSURE**

- Drain Grates must meet Virginia Graham Baker Act Section 19(b)
- pH is outside the range prescribed
- Disinfectant is outside the range prescribed
- Cyanuric acid exceeds 50 ppm
- Pump, filter, or sanitizer feeder is not working
- Cannot see the bottom of the pool
- Evidence of sewage or other pollutants or toxic materials being discharged into the waters or tributary to a beach
- Pool operator is not available
- Fecal accident in the pool

## **PERMIT AND INSPECTION FEE FOR POOLS**

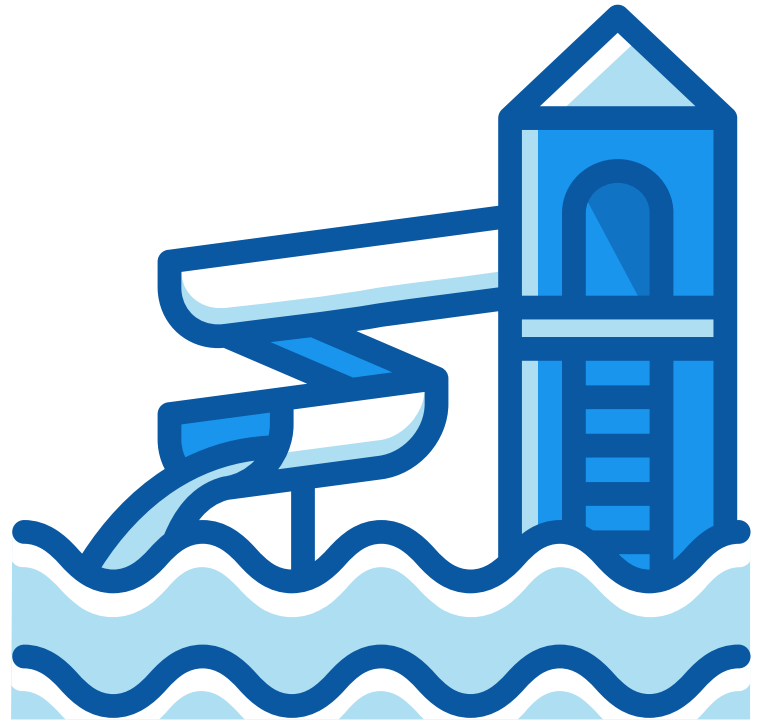
- Permit fee: \$100
- Inspection fee:
  - ≤1000 sq ft: \$90
  - 1001-1500 sq ft: \$150
  - 1501-2000 sq ft: \$200
  - ≥2001 sq ft: \$200
    - each additional 500 sq ft: \$50
  - Water features: +\$75

## **PERMIT AND INSPECTION FEE FOR BEACHES**

- Permit fee: \$100
- Inspection fee:
  - ≤149 linear ft: \$90
  - 150-200 linear ft: \$175
  - ≥201 linear ft: \$175
    - +\$50 for each additional 50 sq ft
  - Water features: +\$75

## **SPLASH PADS**

- Flow meters are not required, but, if installed, they are to be maintained
- No safety equipment or telephone is required
- Rules for the splash pad must be displayed on placard at all entrances
- Animals are to be excluded from the deck or splash pad areas



## **PERMIT AND INSPECTION FEE FOR SPLASH PADS AND SPAS**

- Splash Pad: \$250 per year
  - +\$75 for spray features
- Spa and Hot Tub: \$150 per year

# **QUESTIONS? CONTACT YOUR LOCAL HEALTH DEPARTMENT!**

### **Daviess County**

1600 Breckenridge Street  
P.O. Box 309  
Owensboro, KY 42303  
Phone: 270-686-7744  
Fax: 270-926-8677

### **Hancock County**

175 Harrison Street  
P.O. Box 275  
Hawesville, KY 42348  
Phone: 270-927-8803  
Fax: 270-927-9467

### **Henderson County**

472 Klutey Park Plaza  
Henderson, KY 42420  
Phone: 270-826-3951  
Fax: 270-827-5527

### **McLean County**

200 Highway 81 North  
Suite 101  
Calhoun, KY 42327  
Phone: 270-273-3062  
Fax: 270-273-9983

### **Ohio County**

1336 Clay Street  
Hartford, KY 42347  
Phone: 270-298-3663  
Fax: 270-298-4777

### **Union County**

218 W. McElroy Street  
P.O. Box 88  
Morganfield, KY 42437  
Phone: 270-389-1230  
Fax: 270-389-9031

### **Webster County**

80 Clayton Avenue  
P.O. Box 109  
Dixon, KY 42409  
Phone: 270-639-9315  
Fax: 270-639-7866